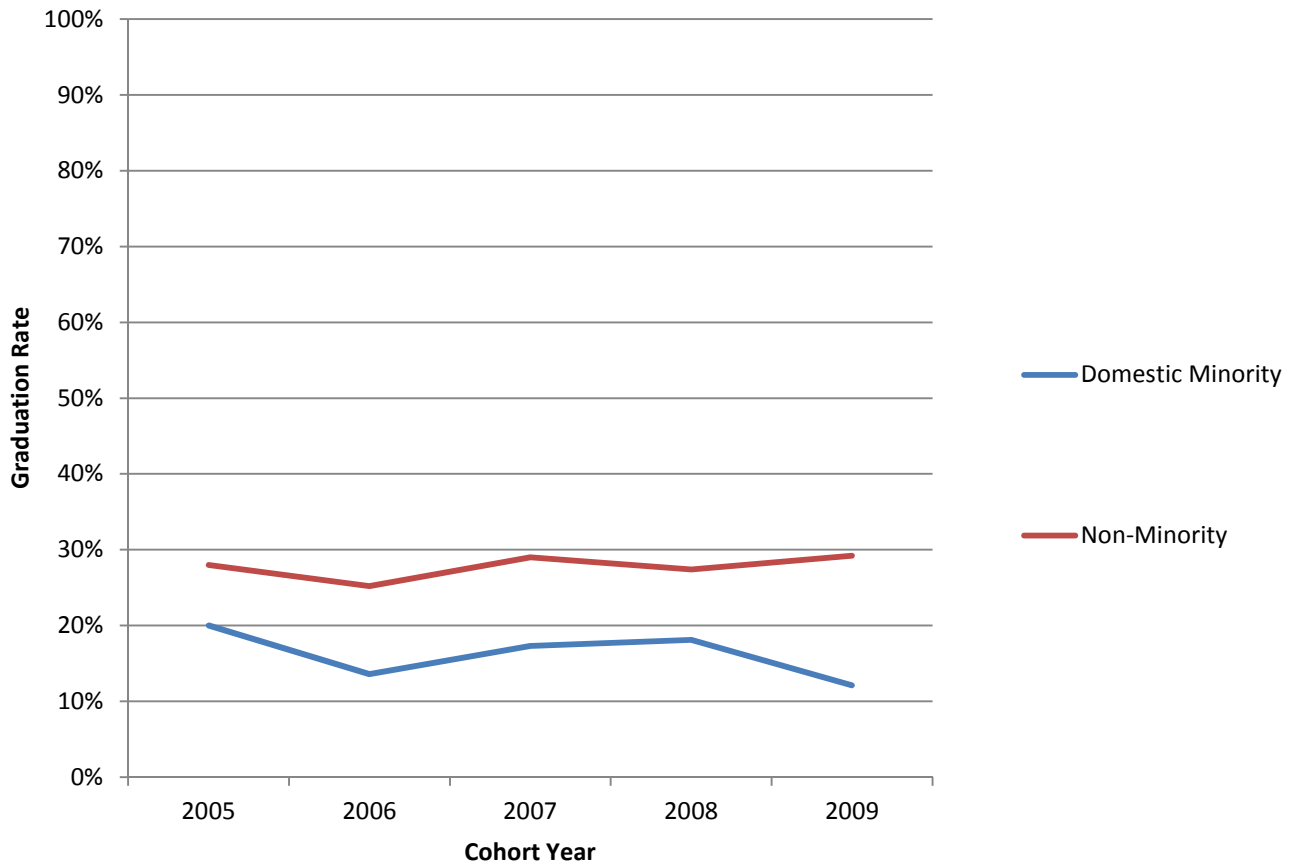


Hamilton Campus Graduation Rates, by Domestic Minority Status* (2005 - 2009 Cohorts)



Graduation Rates, by Domestic Minority Status					
	2005	2006	2007	2008	2009
Domestic Minority	20.0%	13.6%	17.3%	18.1%	12.1%
Non-Minority	28.0%	25.2%	29.0%	27.4%	29.2%

*Graduation rates are calculated using cohorts of first-time, full-time, bachelor's degree-seeking undergraduates and refer to the percentage of students who complete a degree within 6 years.