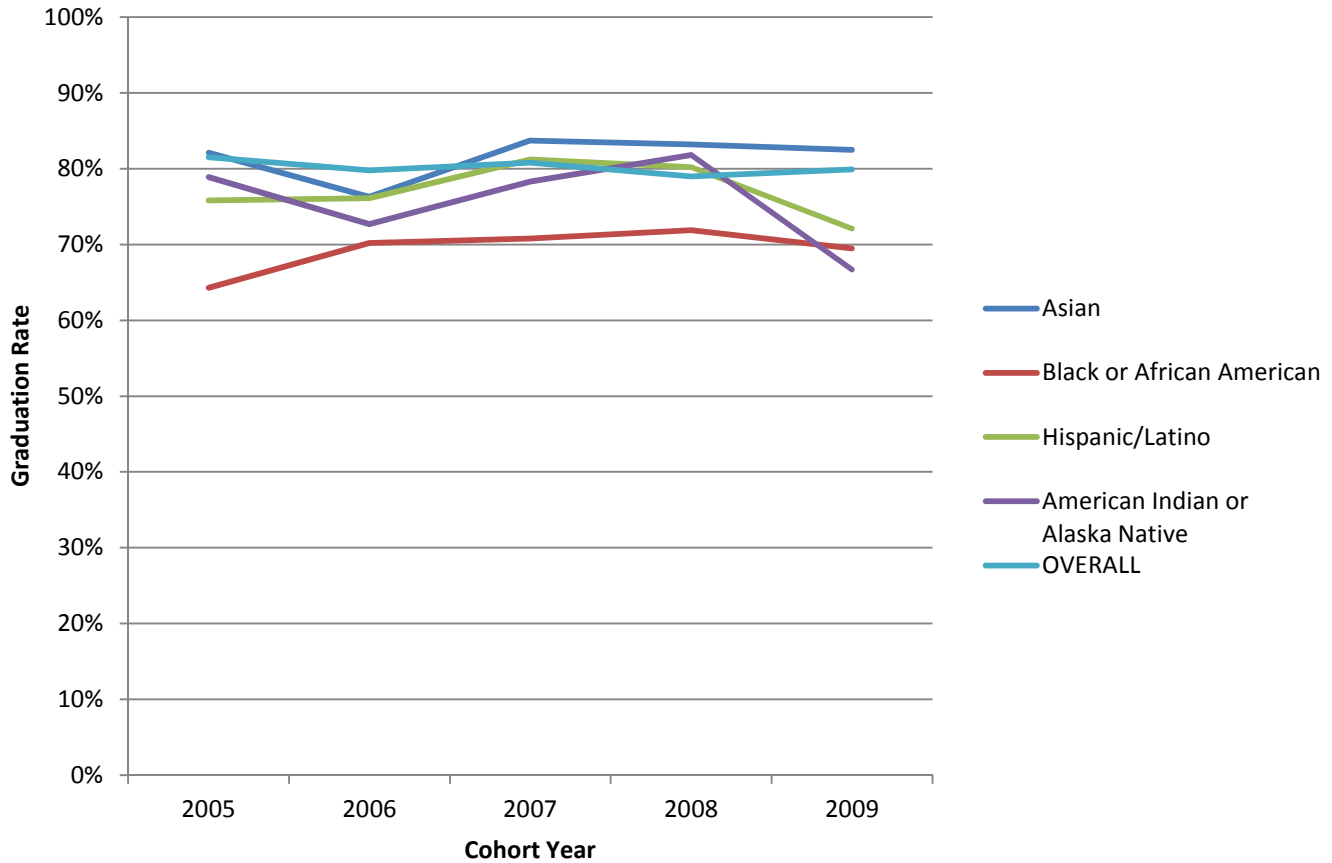


## Oxford Campus Graduation Rates, by Race and Ethnicity\* (2005 - 2009 Cohorts)



**Graduation Rates, by Race and Ethnicity**

	2005	2006	2007	2008	2009
<b>Asian</b>	82.1%	76.3%	83.7%	83.2%	82.5%
<b>Black or African American</b>	64.3%	70.2%	70.8%	71.9%	69.5%
<b>Hispanic/Latino</b>	75.8%	76.1%	81.2%	80.2%	72.1%
<b>American Indian or Alaska Native</b>	78.9%	72.7%	78.3%	81.8%	66.7%
<b>OVERALL</b>	81.5%	79.8%	80.8%	79.0%	79.9%

\*Consistent with IPEDS reporting, graduation rates are calculated using cohorts of first-time, full-time, degree-seeking undergraduates and refer to the percentage of students who complete a degree within 6 years.