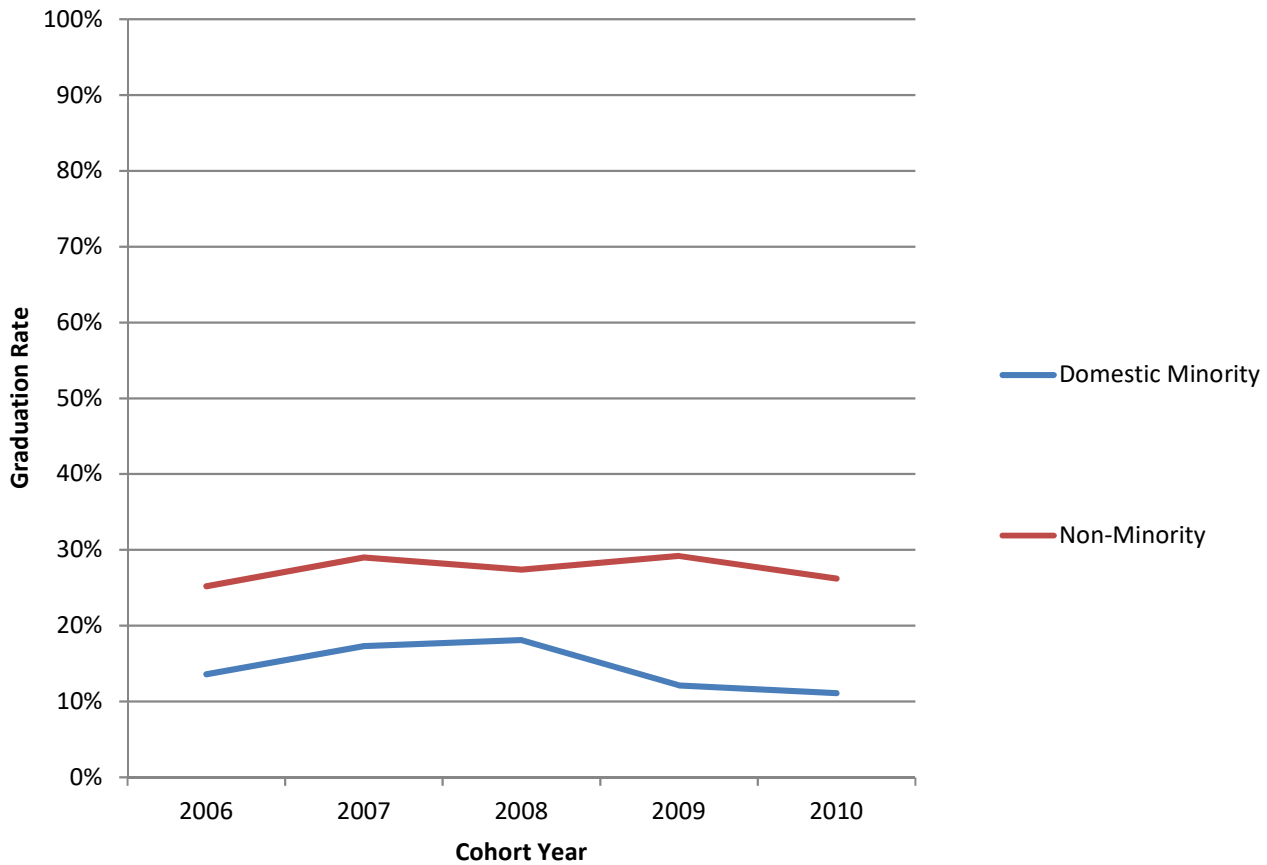


Hamilton Campus Graduation Rates, by Domestic Minority Status* (2006 - 2010 Cohorts)



Graduation Rates, by Domestic Minority Status

	2006	2007	2008	2009	2010
Domestic Minority	13.6%	17.3%	18.1%	12.1%	11.1%
Non-Minority	25.2%	29.0%	27.4%	29.2%	26.2%

*Graduation rates are calculated using cohorts of first-time, full-time, bachelor's degree-seeking undergraduates and refer to the percentage of students who complete a degree within 6 years.