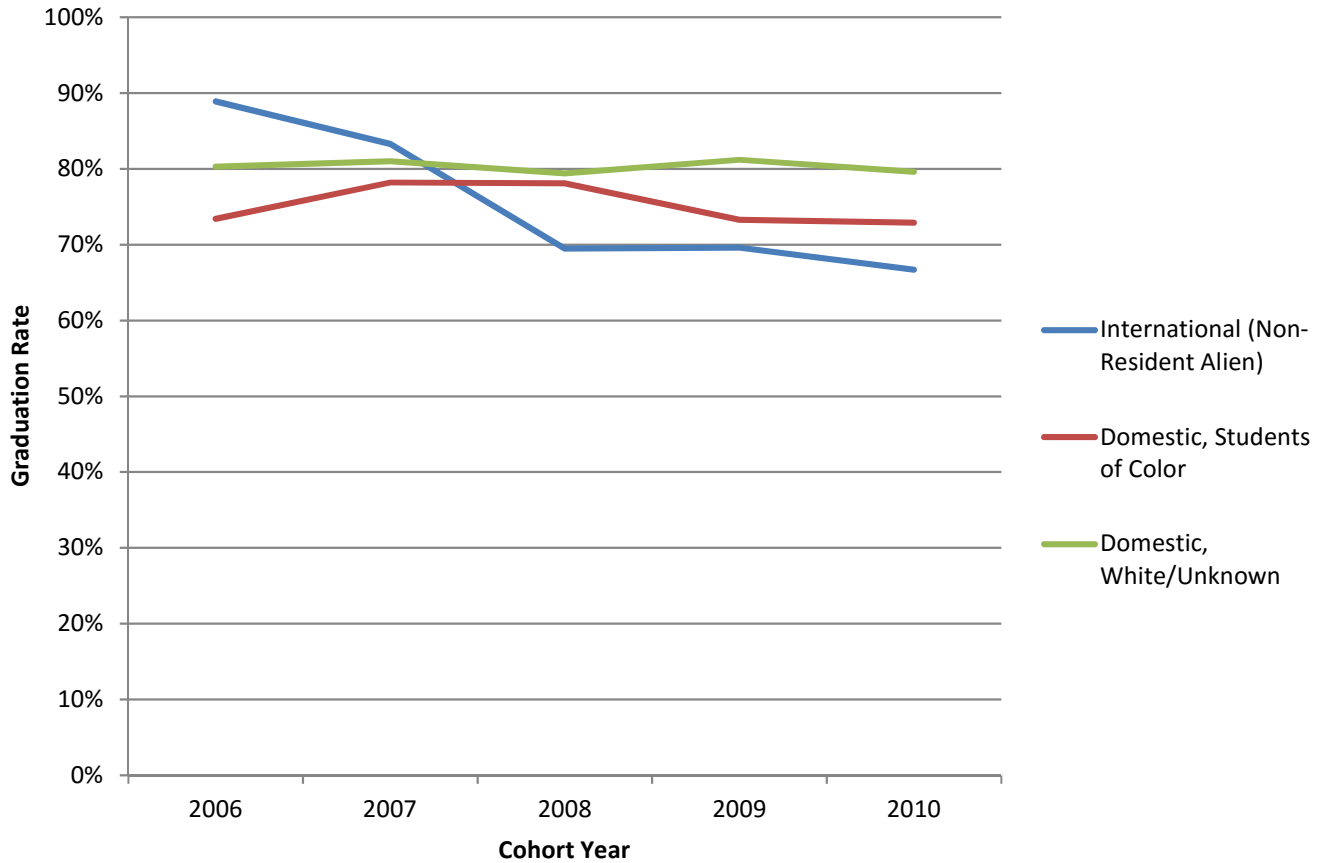


Oxford Campus Graduation Rates, by International Status* (2006 - 2010 Cohorts)



Graduation Rates, by International Status

	2006	2007	2008	2009	2010
International (Non-Resident Alien)	88.9%	83.3%	69.5%	69.6%	66.7%
Domestic, Students of Color	73.4%	78.2%	78.1%	73.3%	72.9%
Domestic, White/Unknown	80.3%	81.0%	79.4%	81.2%	79.6%

*Consistent with IPEDS reporting, graduation rates are calculated using cohorts of first-time, full-time, degree-seeking undergraduates and refer to the percentage of students who complete a degree within 6 years.