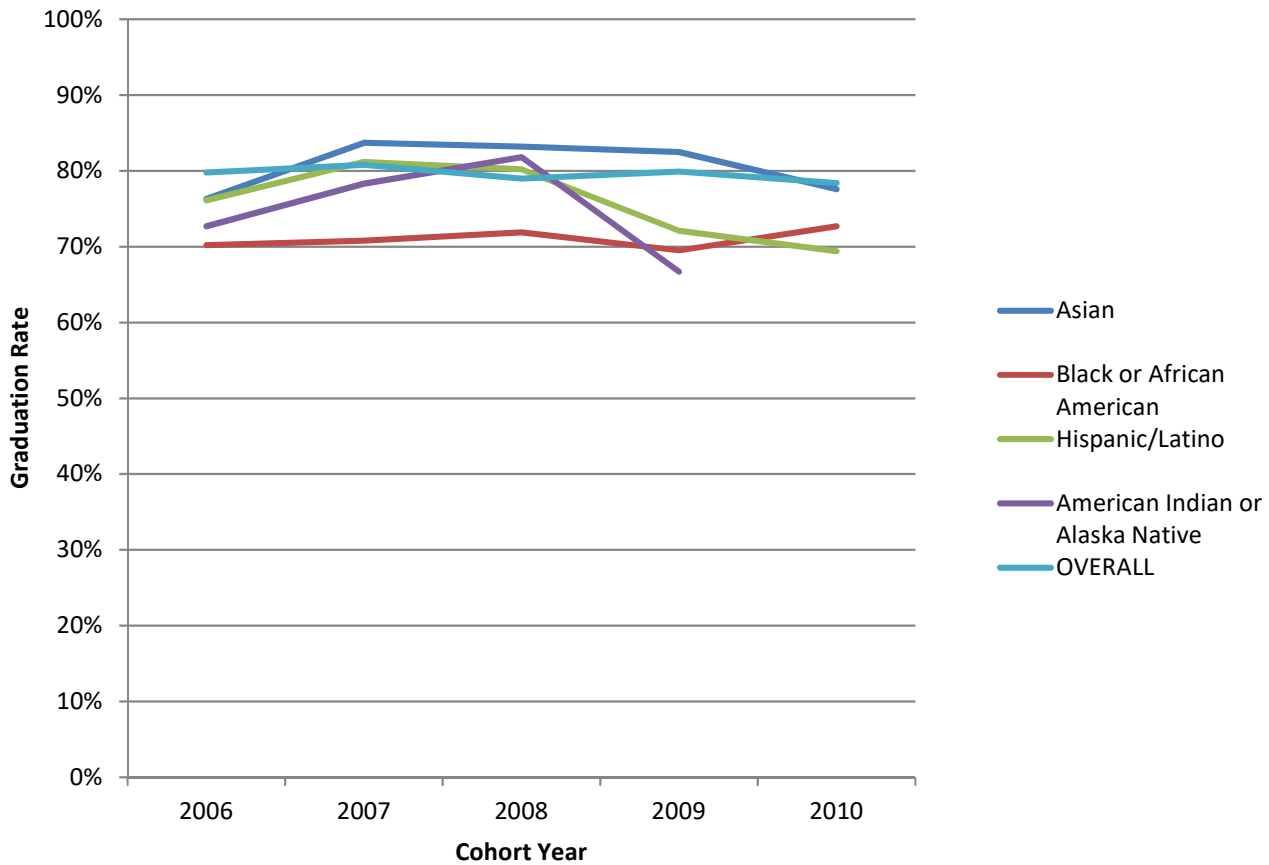


## Oxford Campus Graduation Rates, by Race and Ethnicity\* (2006 - 2010 Cohorts)



**Graduation Rates, by Race and Ethnicity**

	2006	2007	2008	2009	2010
<b>Asian</b>	76.3%	83.7%	83.2%	82.5%	77.6%
<b>Black or African American</b>	70.2%	70.8%	71.9%	69.5%	72.7%
<b>Hispanic/Latino</b>	76.1%	81.2%	80.2%	72.1%	69.4%
<b>American Indian or Alaska Native</b>	72.7%	78.3%	81.8%	66.7%	
<b>OVERALL</b>	79.8%	80.8%	79.0%	79.9%	78.4%

\*Consistent with IPEDS reporting, graduation rates are calculated using cohorts of first-time, full-time, degree-seeking undergraduates and refer to the percentage of students who complete a degree within 6 years.