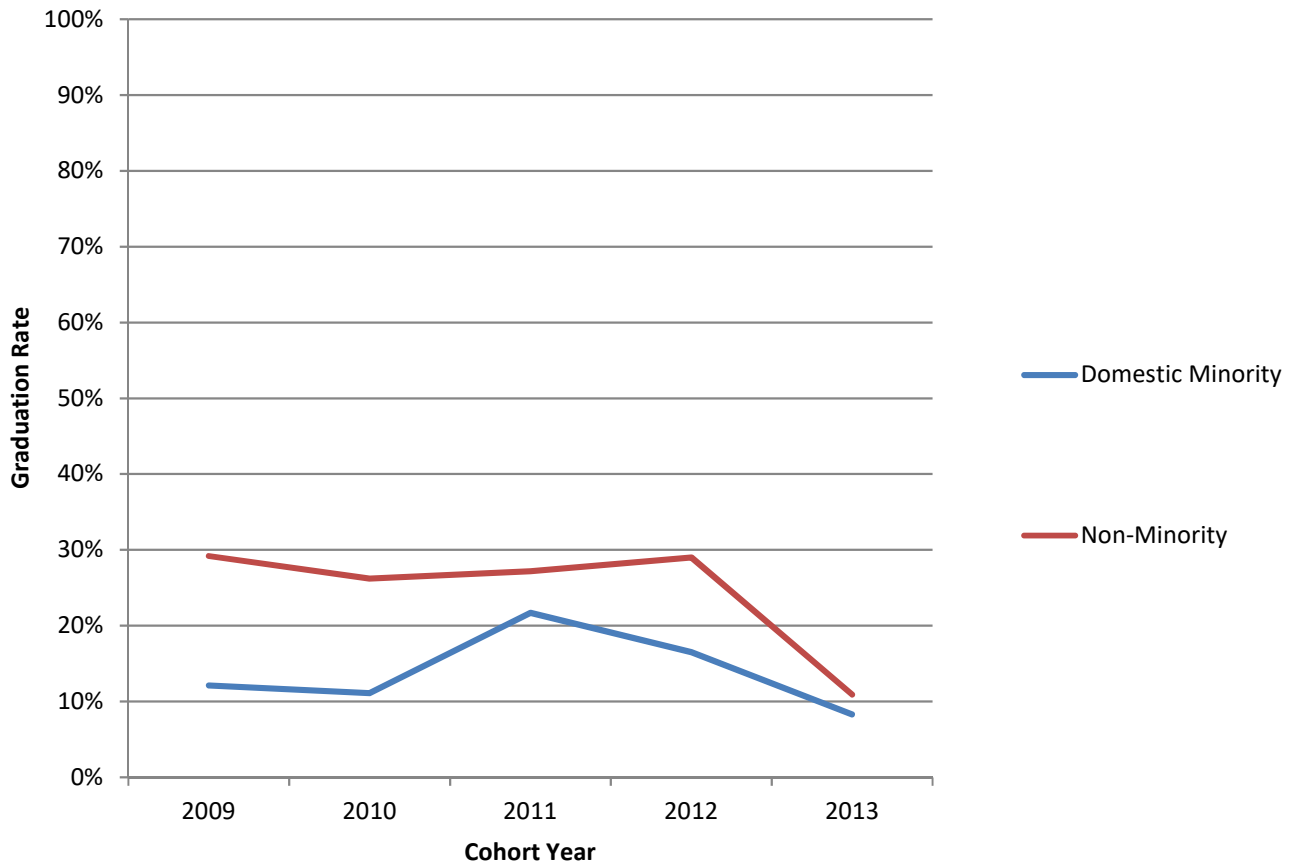


## Hamilton Campus Graduation Rates, by Domestic Minority Status\* (2009 - 2013 Cohorts)



<b>Graduation Rates, by Domestic Minority Status</b>					
	<b>2009</b>	<b>2010</b>	<b>2011</b>	<b>2012</b>	<b>2013</b>
<b>Domestic Minority</b>	12.1%	11.1%	21.7%	16.5%	8.3%
<b>Non-Minority</b>	29.2%	26.2%	27.2%	29.0%	10.9%

\*Graduation rates are calculated using cohorts of first-time, full-time, bachelor's degree-seeking undergraduates and refer to the percentage of students who complete a degree within 6 years. Source: IPEDS